

## For Purleve #1001 Push-Pull Sanitary Door Handle

### HIGH CAPACITY REFILL CARTRIDGE

Approx. 2600 Uses  
per cartridge

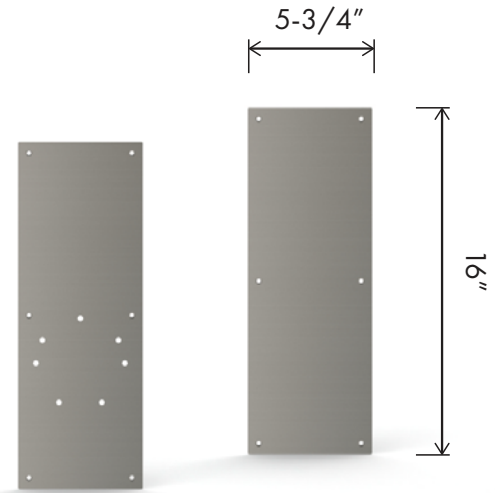


### # 1004/2pk

Pack Contains  
2 Cartridges

### # 1004/Case

Case Contains  
8 Cartridges



### # 1008



### VANDAL RESISTANT HANDLE REINFORCEMENT

Protects lever from being  
damaged due to excessive force

### # 1006

Inside  
Cover Plate

### # 1007

Outside  
Cover Plate

## For Purleve #1002 Latch-Lock Sanitary Door Handle



### STANDARD CAPACITY REFILL CARTRIDGE

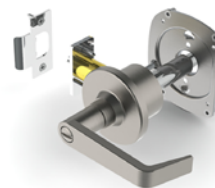
Approx. 1500 Uses  
per cartridge

### # 1005/2pk

Pack Contains  
2 Cartridges

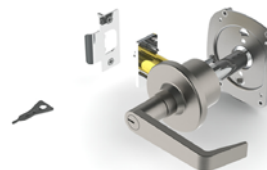
### # 1005/Case

Case Contains  
8 Cartridges



### # 1003

COIN Unlock  
Outside Handle



### # 1014

KEYED Unlock  
Outside Handle