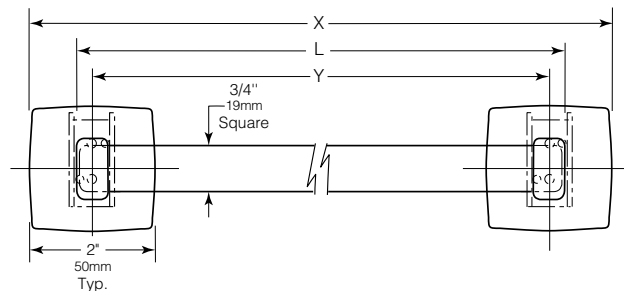




# SURFACE-MOUNTED TOWEL BAR

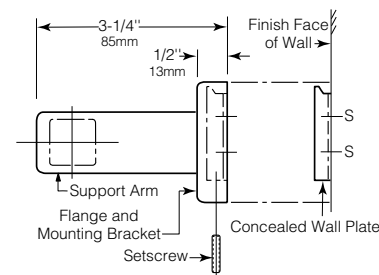
## B-673 B-6737

Specify Model Required: ☐ B-673 Bright polished stainless steel  
☐ B-6737 Satin-finish stainless steel



STANDARD STOCK SIZES

| Model No.   | Bar Length L | Overall Length X | Centerline-to-Centerline Y |
|-------------|--------------|------------------|----------------------------|
| B-673 x 18  | 18" (455mm)  | 19-5/8" (500mm)  | 17-5/8" (450mm)            |
| B-673 x 24  | 24" (610mm)  | 25-5/8" (650mm)  | 23-5/8" (600mm)            |
| B-6737 x 24 | 24" (610mm)  | 25-5/8" (650mm)  | 23-5/8" (600mm)            |



### MATERIALS:

**Flanges and Support Arms (2)** — 18-8, type-304, 22-gauge (0.8mm) stainless steel. Each flange has concealed, 16-gauge (1.6mm) stainless steel mounting bracket. All-welded construction. Secured to wall plates with stainless steel locking set-screws.

**Concealed Wall Plates (2)** — 18-8, type-304, 16-gauge (1.6mm) stainless steel.

**Towel Bar** — 18-8, type-304, heavy-gauge stainless steel. Lockseam rolled, 3/4" (19mm) square tubing.

### INSTALLATION:

To remove concealed wall plates from back of flanges and mounting brackets, loosen locking setscrews. Mount each wall plate so prongs are at top; secure with two sheet-metal screws, furnished by manufacturer, at points indicated by an S. Engage mounting brackets onto prongs of wall plates, then secure into position by tightening locking setscrews at bottom of flanges.

**Note:** Centerline-to-centerline of concealed wall plates must be within 1/16" (1.6mm) of the Y dimension given.

For plaster or dry wall construction, provide concealed backing to comply with local building codes, then secure unit with screws furnished. For other wall surfaces, provide fiber plugs or expansion shields for use with sheet-metal screws furnished, or provide 1/8" (3mm) toggle bolts or expansion bolts.

### SPECIFICATION:

Surface-mounted towel bar shall be type-304 stainless steel with \_\_\_\_\_ (insert one: bright polished or satin) finish. Flanges and support arms shall be 22 gauge (0.8mm) and equipped with concealed, 16-gauge (1.6mm) mounting brackets that are secured to concealed, 16-gauge (1.6mm) wall plates with locking setscrews. Towel bar shall be 3/4" (19mm) square tubing.

Surface-Mounted Towel Bar shall be Model \_\_\_\_\_ (insert model number) of Bobrick Washroom Equipment, Inc., Clifton Park, New York; Jackson, Tennessee; Los Angeles, California; Bobrick Washroom Equipment Company, Scarborough, Ontario; Bobrick Washroom Equipment Pty. Ltd., Australia; and Bobrick Washroom Equipment Limited, United Kingdom.