

DESIGN

DURABLE

SUSTAINABLE

BOBRICK

BUILDING VALUE SINCE 1906

TrimLineSeries™



BOBRICK



TrimLineSeries™ offers a sleek, minimalist design manufactured with satin-finish Type-304 stainless steel. This range of models features 90° angles on all exterior and interior corners and openings. Doors have 90° returns to conceal flanges for additional design simplicity.

The range now includes flush locks and built-in TowleMate®.

Most models are available in specialty metals such as brass and bronze, LIC color-infused stainless steel or powder-coated colors. Contact your sales representative for details.

3IN1 COMBINATION

NEW



B-38030

B-38030

3-in-1 Recessed Paper Towel Dispenser, Automatic Hand Dryer and Waste Bin

Combining the built-in TowelMate® with an automatic hand dryer reduces towel usage up to 30%. Sustainable 900-watt high-performance hand dryer for reduced energy consumption and waste. Dispenses 600 multifold or 450 C-fold paper towels. 13.7 L leak-proof waste bin. Meets reach range requirements for Australian DDA, UK Doc M, US ADA and similar standards. Available in 115V and 230V versions. See image on page 2.

B-38031 Similar to B-38030, but with 8" cabinet depth for increased 7.2 gal. waste capacity.

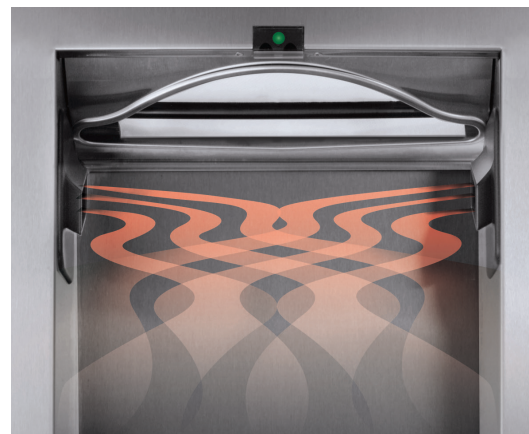
See model chart below for options.

Features & Benefits

Reduces towel usage, energy use and waste while providing a fast, comfortable and quite hand dry.

- **Economical:** Patented TowelMate dispenses a single towel at a time eliminating bunching, reducing usage by up to 20%.
- **Sustainable:** Patrons reduce consumption and waste by combining a 900-watt high performance dual-air hand dryer and a single paper towel.
- **Compliant:** Paper dispenser, air outlets and waste disposal meet reach range requirements for Australian DDA, UK Doc M, US ADA and similar standards. cULus listed, CE marked.
- **Durable:** Robust type 304 stainless steel, hinges provide long life, vandal resistance and easy maintenance.

Model	Mounting	Depth	Capacity
B-38030	Recessed	4"	3.6-gal
B-380309	Surface	4"	3.6-gal
B-38031	Recessed	8"	7.2-gal



Detail of B-38030 Drying Zone

COMBINATION UNITS



B-36903
Recessed Paper Towel Dispenser/Waste Receptacle

Satin-finish stainless steel. Reduces towel usage up to 20% with TowelMate built in. Dispenses 300 C-fold or 400 multifold towels. Equipped with cable door-swing limiter and removable, leak-proof, 1.6-gal waste container. Cabinet does not lock.



B-3803
Recessed Paper Towel Dispenser/Waste Receptacle

Satin-finish stainless steel. Reduces towel usage up to 20% with TowelMate built in. Dispenses 600 C-fold, 800 multifold or 1100 single-fold towels. Equipped with cable door-swing limiter and removable, leak-proof, 6.3-gal waste container.

B-38032 Similar to B-3803, but with 2" skirt for semi-recessed installation. Waste capacity: 6.3-gal.



B-39003
Recessed Paper Towel Dispenser/Waste Receptacle

Satin-finish stainless steel. Reduces towel usage up to 20% with TowelMate built in. Dispenses 600 C-fold, 800 multifold or 1100 single-fold towels. Equipped with cable door-swing limiter and removable, leak-proof, 12-gal waste container.



B-380349
Surface-Mounted Paper Towel Dispenser/Waste Receptacle

Satin-finish stainless steel. 4" stainless steel skirt for surface mounting. Reduces towel usage up to 20% with TowelMate built in. Dispenses 600 C-fold or 800 multifold. Equipped with cable door-swing limiter and removable, leak-proof, 3.8-gal waste container.

B-38034 Similar to B-38049, but recessed. Waste capacity: 3.8-gal.

HAND DRYERS



B-3725 Recessed Hand Dryer

6" deep drying alcove with ceramic water absorbent surface to capture and evaporate water. Only protrudes 2" from wall face. Heavy 18-gauge, Type-304 satin-finish stainless steel cover. 70 dBA sound level. Low 1000W power usage. 115V cULus Listed. 240V cULus Listed and CE marked. See image above.



B-7125 InstaDry™ Surface-Mounted Hand Dryer

4" depth. Durable, 18-gauge, Type-304 satin-finish stainless steel cover. Sustainable 200 W power rated. 12-second hand dry time. Universal voltage hand dryer cULus Listed and CE marked.



B-7128 TrimDry™ Surface-Mounted Hand Dryer

Part of the QuietDry™ Series at a mere 71 dBA sound level. 4" depth. Durable, 22-gauge, Type-304 satin-finish stainless steel cover with black plastic trim. 115V hand dryer cULus Listed. 240V hand dryer cULus Listed, VDE approved and CE marked.

B-7120 Similar to B-7128, but with white epoxy-painted cover.

PAPER TOWEL DISPENSERS



B-35903
Recessed Paper Towel Dispenser

Satin-finish stainless steel. Reduces towel usage up to 20% with TowelMate built in. Dispenses 300 C-fold or 400 multifold towels. Door has full-length piano-hinge and cable door-swing limiter. Cabinet does not lock.



B-359033
Recessed Paper Towel Dispenser

Satin-finish stainless steel. Reduces towel usage up to 20% with TowelMate built in. Dispenses 300 C-fold or 400 multifold towels. Door has flush-mounted tumbler lock, full-length piano-hinge and cable door-swing limiter. See image on page 8.

PAPER TOWEL DISPENSERS



B-359039

Surface-Mounted Paper Towel Dispenser

Satin-finish stainless steel. 4" stainless steel skirt for surface mounting. Reduces towel usage up to 20% with TowelMate built in. Dispenses 300 C-fold or 400 multifold towels. Door has flush-mounted tumbler lock, full-length piano-hinge and cable door-swing limiter. See image on page 6.



B-318

Concealed Paper Towel Dispenser

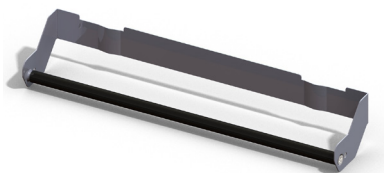
Satin-finish stainless steel. Dispenses 600 C-fold or 800 multifold towels. Towels load into bottom of cabinet concealed behind wall or mirror; only the towel tray is visible.



B-526

Countertop-Mounted Paper Towel Dispenser

Satin-finish stainless steel. Flange has 90° return. Towels load into top of dispenser. Dispenses 300 C-fold or multifold towels. Housing below countertop to conceal dispenser is not included.



TowelMate® Accessory

Built-in TowelMate Accessory reduces towel usage up to 20% by dispensing one towel at a time. Eliminates the dispensing of handfuls of towels with the "perfect pull rod" separating and dispensing individual C- or multifold towels.

Retrofittable parts available for items manufactured before January 2021. Visit Bobrick.com for model association. Patented.

WASTE RECEPTACLES



B-35633

Recessed Waste Receptacle with Disposal Door

Satin-finish stainless steel. 18-gauge door with full-length piano-hinge, cable door-swing limiter and equipped with a flush-mounted tumbler lock. Removable stainless steel waste container. 3-gal capacity. See image above.



B-35643

Recessed Waste Receptacle

Satin-finish stainless steel. 18-gauge door with full-length piano-hinge, cable door-swing limiter and equipped with two flush-mounted tumbler locks. Removable, leak-proof plastic waste container. 12-gal capacity.

WASTE RECEPTACLES



B-35639

Surface-Mounted Waste Receptacle with Disposal Door

Satin-finish stainless steel. 4" stainless steel skirt for surface mounting. 18-gauge door with full-length piano-hinge, cable door-swing limiter and equipped with a flush-mounted tumbler lock. Removable stainless steel waste container. 3-gal capacity. See image on page 6.



B-35649

Surface-Mounted Waste Receptacle

Satin-finish stainless steel. 4" stainless steel skirt for surface mounting. 18-gauge door with full-length piano-hinge, cable door-swing limiter and equipped with two flush-mounted tumbler locks. Removable, leak-proof plastic waste container. 12-gal capacity.



B-527

Countertop-Mounted Waste-Disposal Door

Satin-finish stainless steel. Door is self-closing. Flange has 90° return. Waste receptacle and housing below counter to conceal receptacle are not included.



B-532

Countertop-Mounted Circular Waste Chute

Satin-finish stainless steel. Flat flange suitable for counter, recessed, or under-counter installation. Waste receptacle and housing below counter to conceal receptacle are not included.

SOAP DISPENSERS



B-306 **Recessed Soap Dispenser**

Satin-finish stainless steel. Enclosed plastic soap vessel on back of door. Swings open for easy filling. Full-length hinge and key lock secure door to cabinet. Capacity: 45 fl-oz. See image on page 2.



B-26607 **Surface-Mounted Liquid Soap Dispenser**

Satin-finish stainless steel. Accepts liquid soap cartridges or bulk-fill soaps. Push activated with less than 5lb. Capacity: 17 fl-oz. See image on page 6.

B-26617 Similar to B-26607, but with 33.8 fl-oz capacity. See image on page 11.



B-26627 **Surface-Mounted Foam Dispenser**

Satin-finish stainless steel. Accepts foam soap cartridges or bulk-fill soaps. Push activated with less than 5lb. Capacity: 17 fl-oz. See image on page 6.

B-26637 Similar to B-26627, but with 33.8 fl-oz capacity. See image on page 11.



B-2012 **Automatic Wall-Mounted Soap Dispenser**

Satin-finish stainless steel. No-touch sensor-activation. Also dispenses surgical soaps. Capacity: 28.7 fl-oz.

B-2013 Similar to B-2012, but dispenses foam.

CHANGING STATIONS



KB110-SSRE-INB

Recessed Horizontal Baby Changing Station

Satin-finish stainless steel exterior with grey polyethylene interior. Infused with Microban® anti-microbial for hygiene. Smooth, concave changing bed with safety straps, liner dispenser, bag hooks and molded instructions. See image above.

Dimensions: 37" x 23" x 4-1/4"



KB111-SSRE-INB

Recessed Vertical Baby Changing Station

Satin-finish stainless steel exterior with grey polyethylene interior. Infused with Microban® anti-microbial for hygiene. Smooth, concave changing bed with safety straps, liner dispenser, bag hooks and molded instructions.

Dimensions: 24-1/4" x 39-1/2" x 4"



ACCOMMODATION PRODUCT

NEW



B-635

Klutch Mobile Device Holder

Unique stainless steel holder for storing mobile devices. Sleek, compact design "klutches" mobile devices for safety and fits with any décor. Easy installation makes it suitable for toilet compartments, common spaces or private areas. Integrated bag hook holds up to 300 lbs and can accommodate multiple items.



TOILET TISSUE DISPENSER



B-35883

Recessed Multi-Roll Toilet Tissue Dispenser

Satin-finish stainless steel. Spindle is vandal-resistant 1" diameter stainless steel tubing, holds two rolls. Equipped with flush-mounted tumbler lock. See image above.



B-3588

Surface-Mounted Multi-Roll Toilet Tissue Dispenser

Satin-finish stainless steel. Includes stainless steel skirt for surface mounting. Spindle is vandal-resistant 1" diameter stainless steel tubing, holds two rolls. Equipped with flush-mounted tumbler lock.

SEAT COVER DISPENSER



B-3013

Recessed Seat-Cover Dispenser

Satin-finish stainless steel. Dispenses 500 toilet seat covers. Equipped with flush-mounted tumbler lock.

SANITARY DISPOSALS

**B-3513****Recessed Sanitary Waste Disposal**

Satin-finish stainless steel unit with removable waste container. Door secures to cabinet with a magnet catch and cable door-swing limiter. Capacity: 0.6-gal.

**B-35139****Surface-Mounted Sanitary Waste Disposal**

Satin-finish stainless steel unit with removable waste container. Includes stainless steel skirt for surface mounting. Door secures to cabinet with a magnet catch and cable door-swing limiter. Capacity: 0.6-gal.

**B-35303****Recessed Sanitary Waste Disposal**

Satin-finish stainless steel. Self-closing panel covers disposal opening. Removable, leak-proof, 1.2-gal plastic container.

**B-3541****Surface-Mounted Sanitary Disposal Bag Dispenser**

Satin-finish stainless steel. Concealed wall plate 22-gauge Type-304 stainless steel. Holds one pack of 25 two-ply plastic bags.

CUBICLE COLLECTION



This suite of products adds convenience and style to any washroom or toilet cubicle. Featuring contemporary styling, the models share common elements such as coordinated threaded escutcheons and post diameters.

NEW

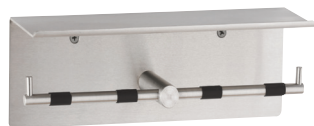


B-546
Surface-Mounted Single Roll Toilet Tissue Dispenser with Hood

Satin-finish stainless steel. Holds single toilet tissue roll. Threaded flange conceals mounting plate, provides snug fit to the wall.

B-543 Similar to B-546, but without hood.

B-5436 Similar to B-543, but with bright-polished finish.

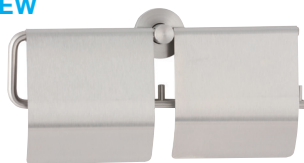


B-540
Surface-Mounted Double Roll Toilet Tissue Dispenser and Utility Shelf

Satin-finish stainless steel. 14-gauge shelf features upturned front edge. Wall plate 1/4" (6mm). Holds two standard-core toilet tissue rolls up to 4-1/2" (110mm) diameter (500 sheets).

CUBICLE COLLECTION

NEW



B-548

Surface-Mounted Double Roll Toilet Tissue Dispenser with Hoods

Satin-finish stainless steel. Holds two toilet tissue rolls. Threaded flange conceals mounting plate, provides snug fit to the wall.

NEW



B-547 Similar to B-548, but without hoods.

NEW



B-549

Surface-Mounted Double Coat Hook

Satin-finish stainless steel. Threaded flange conceals mounting plate, provides snug fit to the wall. Flange has 2" diameter.

B-542 Similar to B-549, but with one hook pin.

B-5426 Similar to B-542, but with bright-polished finish.



B-541

Surface-Mounted Spare Toilet Roll Holder

Satin-finish stainless steel. Threaded flange conceals mounting plate, provides snug fit to the wall. Vertical post accommodates one roll.

B-5416 Similar to B-541, but with bright-polished finish.



B-544

Surface-Mounted Toilet Brush Holder

Heavy-duty satin-finish stainless steel. Vandal-resistant wall-mounting bracket. Stainless steel handle with nylon brush head. Water reservoir included.

B-5446 Similar to B-544, but with bright-polished finish.

DESIGN

DURABLE

SUSTAINABLE

HYGIENIC

COMPLIANT

ECONOMICAL

FREEDOM

BOBRICK

BUILDING VALUE SINCE 1906

Bobrick.com

Customer Service: 818-982-9600

Email: customerservice@bobrick.com

BOBRICK