



AMERICAN SPECIALTIES, INC.

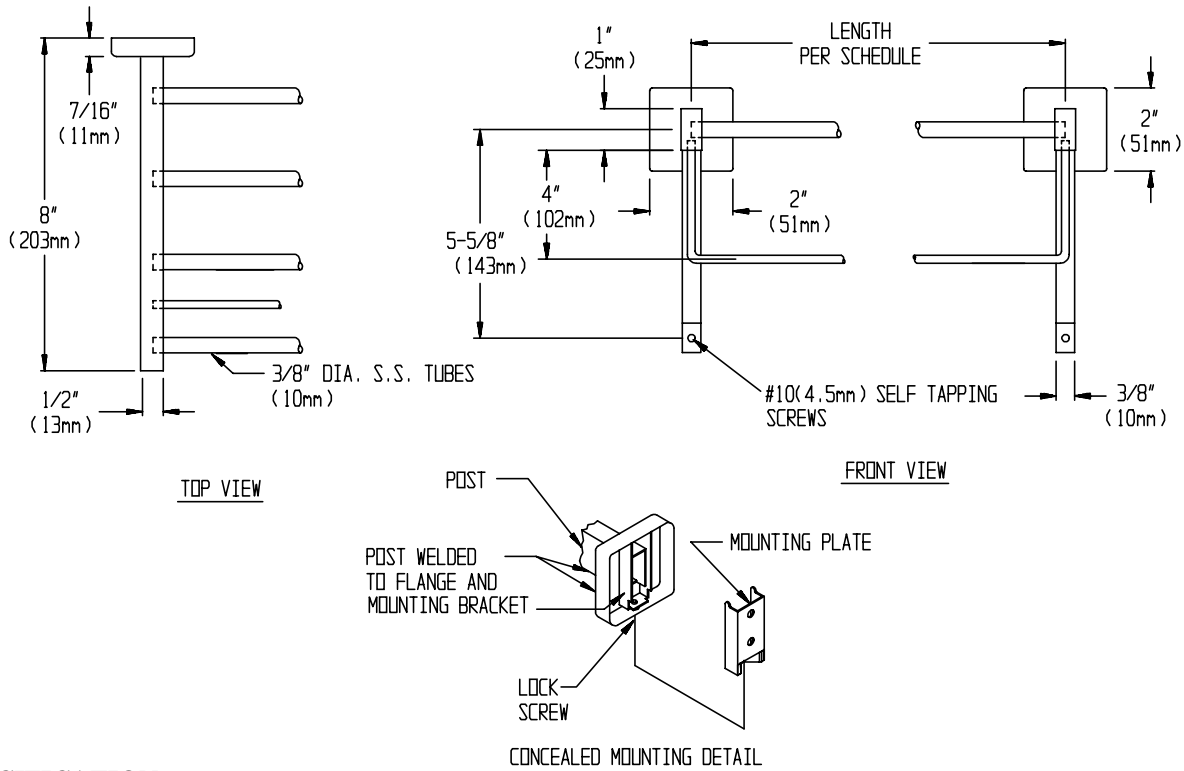
441 Saw Mill River Road, Yonkers, NY 10701 (914) 476-9000
www.americanspecialties.com

MODEL No: 7310

ISSUED: 1-87

REVISED: 1-06

SURFACE MOUNTED TOWEL SHELF WITH DRYING ROD AND SUPPORT BRACKETS



SPECIFICATION

Surface Mounted Towel Shelf with Drying Rod and Support Brackets shall be fabricated of stainless steel alloy 18-8, type 304. Shelf posts shall be 1/2" x 1" (13mm x 25mm) rectangular tubing with formed mounting flange and bracket welded on end. Cross tubes shall be 3/8" diameter (Ø10mm) and shall be held in receiver holes in support posts. A solid stainless steel 1/4" diameter (Ø 6.4mm) drying rod shall be attached at midpoint of support posts and support brackets shall be provided. Mounting plates shall be included and shall be 18 gauge. Stainless steel setscrews shall be provided on bottom perimeter of flanges to lock unit to mounting plates. Surface finish shall be bright or satin as chosen by option and indicated by code suffix. Length shall be as chosen from schedule and indicated by code suffix.

Surface Mounted Towel Shelf with Drying Rod and Support Brackets shall be Model N° 7310-B __ or N° 7310-S __ of American Specialties, Inc., 441 Saw Mill River Road, Yonkers, New York 10701-4913

INSTALLATION

Surface mount unit on wall using N° 10 self tapping screws (by others) through holes provided in mounting plates into suitable prepared mountings (by others) or other suitable mounting hardware (by others) to suit wall conditions. Hang post and flange assembly on mounting plates and tighten setscrews to lock unit to plates. For compliance with ICC/ANSI A-117.1-2003 and ADA Accessibility Guidelines install unit with top of shelf 48" (1219mm) maximum above finished floor (MAX AFF) if clear floor forward reach or if clear floor side reach access only is provided or 46" (1168mm) MAX AFF if side reach access over an obstruction (e.g. vanity) with reach depth greater than 10" (254mm) and less than 25" (635mm) is only provided or 44" (1118mm) MAX AFF if forward reach over an obstruction (e.g. commode) with reach depth greater than 20" (508mm) and less than 25" (635mm) is only provided. For general utility install 68" (1727mm) MAX AFF.

LENGTHS AND FINISHES x MODEL N°		
LENGTH	MODEL N°	
	Bright	Satin
18" (457mm)	7310-B18	7310-S18
24" (610mm)	7310-B24	7310-S24

Accessory Specialties

AMERICAN DISPENSER

Desert Ray Products

WATROUS INC.

THIS MANUFACTURER RESERVES THE RIGHT TO MAKE CHANGES IN DESIGN OR DIMENSIONS WITHOUT FORMAL NOTICE