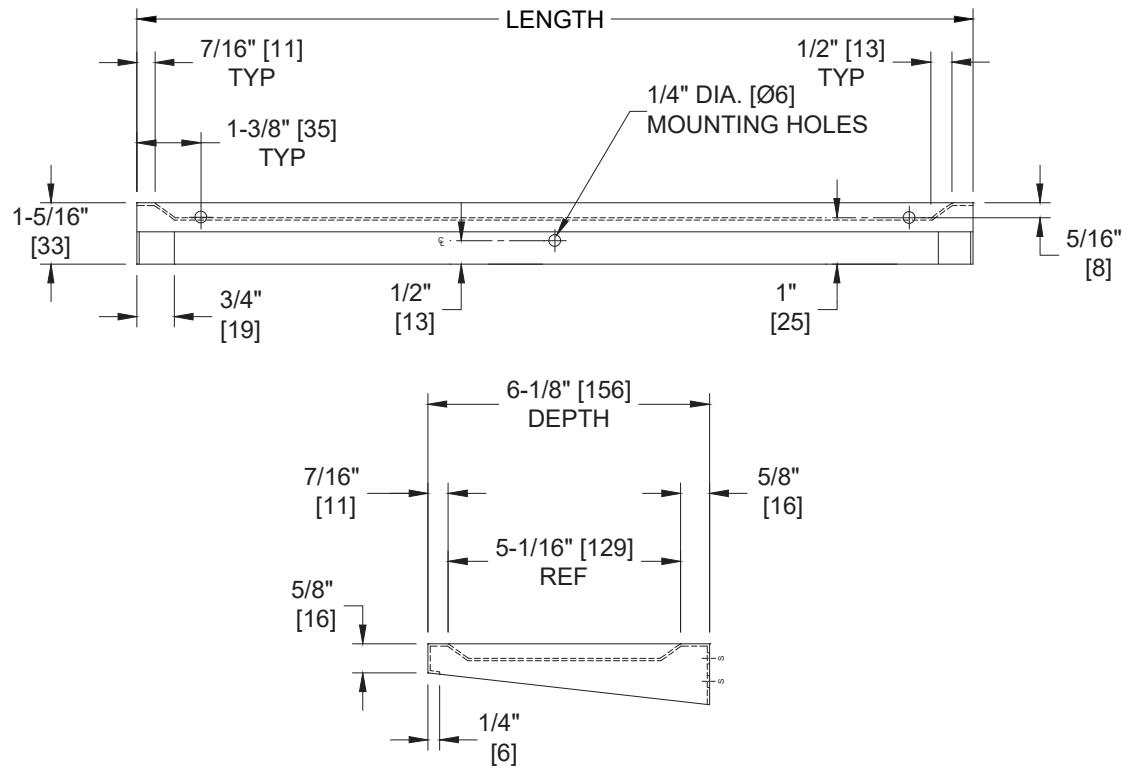



**American Specialties, Inc.**
**Model #0690**
**Technical Data Sheet**
**Shelf With Raised Edges, 18" or 24" Length**
*Shelves*
*MasterFormat Section 10 28 13*

 Scan for  
Information

**SUSTAINABILITY/LEED**

MR 4.1 (1) MR 6 (1) EQ 4.2 (1)

MR 4.2 (1) EQ 4.1 (1) EQ 4.4 (1)

**NOTE:**

ALL DIM'S INCH [MM]

ILLUSTRATION FOR REF ONLY AND NTS

 FOR CLEANING INSTRUCTIONS SEE APPROPRIATE SECTIONS IN  
PRODUCT CARE & MAINTENANCE BULLETIN (PCM) ON ASI WEBSITE

**PRODUCT OVERVIEW**

Entire unit is formed of one piece of 18 gauge stainless steel having a 3/8" [9] depression with a satin finish. Multiple sizes available.

**KEY FEATURES & SPECIFICATIONS**

- Type 304 Stainless Steel - Satin Finish
- Surface Mounted
- 18" [457] or 24" [610] Wide - Specify Size

**American Specialties, Inc.****Model #0690****Technical Data Sheet****OPERATION & MAINTENANCE**

Shelf is stable and stationary after proper and secure mounting to adequate wall reinforcement or stud structure. Shelf is suitable for toiletry material storage.

**TECHNICAL INFORMATION / PRODUCT PROPERTIES**

Property	Value
Dimensions	18" [457] W x 6" [152] D or 24" [610] W x 6" [152] H
Construction	Type 304 Stainless Steel - Satin Finish
Mounting	Surface Mounted

**INSTALLATION**

Unit is surface mounted on wall or partition using #10 self-threading screws (by others) through (3) holes provided in shelf back return. For compliance with 2010 ADA Accessibility Standards install unit so that shelf top is between 48" [1219] maximum Above Finished Floor (AFF) and 32" [813] minimum AFF. For most common utility, typical is 42" [1067] AFF or 18" [457] above wash basin.

**SCHEDULE OF AVAILABILITY**

Size chart:                      0690-18 - 18" [457] W x 6" [152] D                      0690-24 - 24" [610] W x 6" [152] D

**WARRANTY**

One (1) Year from date of Invoice