



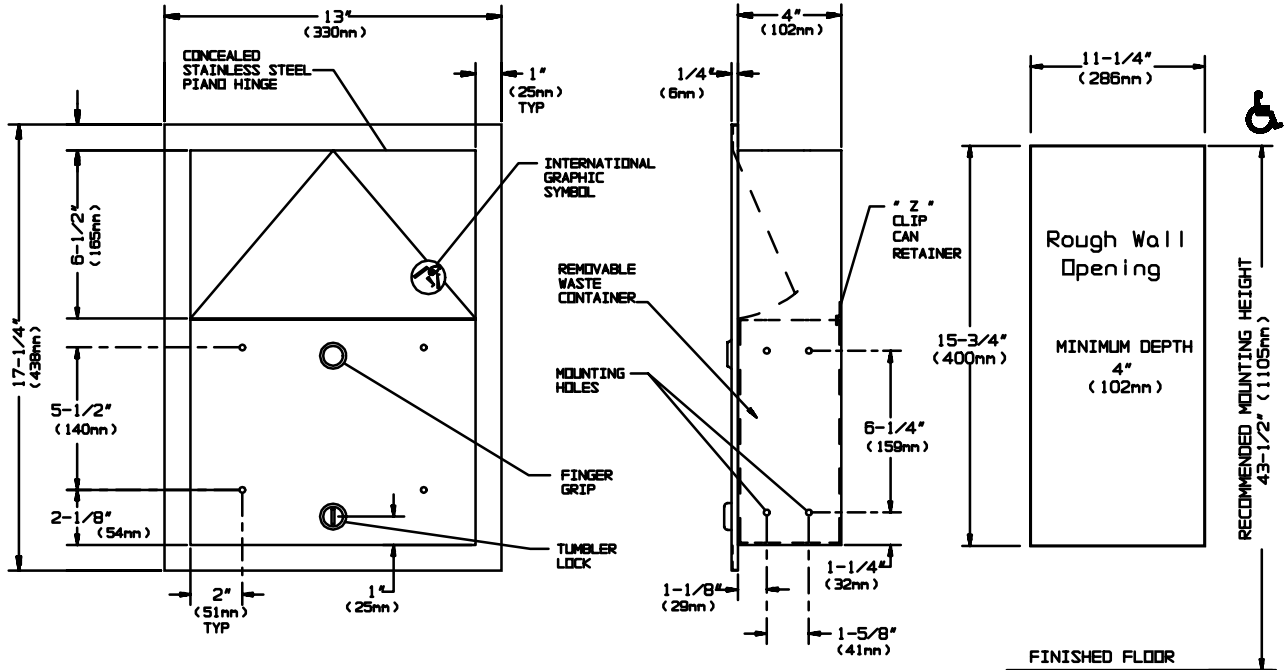
AMERICAN SPECIALTIES, INC.
441 Saw Mill River Road, Yonkers, NY 10701 (914) 476-9000

MODEL No: 0473-1

ISSUED: 1-87

REVISED: 4-03

RECESSED SANITARY NAPKIN DISPOSAL



SPECIFICATION

Recessed Sanitary Napkin Disposal with locking waste receptacle shall hold 1.5 gal (5.7liters) of dry/solids waste and shall have doors and cabinet fabricated of alloy 18-8 stainless steel, type 304, N°22 gauge. Structural assembly of body and door components shall be of welded construction. Upper door shall be hung on cabinet with a stainless steel spring hinge and have the international napkin disposal symbol on face. Waste container shall be retained by internal angle and lock keyed alike to other ASI Washroom Equipment and have safety edge finger grip. All exposed surfaces shall have a N° 4 satin finish and be protected during shipment with a PVC film that shall be easily removable after installation. Face trim shall be of one piece construction 1" (25.4mm) wide with no welded miters and shall have square 1/4" (6.35mm) returns.

Recessed Sanitary Napkin Disposal shall be Model N°0473-1 as manufactured by American Specialties, Inc., 441 Saw Mill River Road, Yonkers, New York 10701-4913

INSTALLATION

Unit is mounted in wall recess using N°10 self tapping screws (by others) through concealed mounting holes provided. Note top of rough wall opening is 3/4" (19mm) below top of unit.

Rough Wall Opening required is..... 11-1/4"W x 15-3/4"H x 4"D. minimum (286mm x 400mm x 102mm).

OPERATION

Users push door to deposit waste material. Door is self-closing. Maintenance schedule determines waste removal cycle. Unit is emptied by removing bottom waste container and inverting over collection bag. Waste container is captured by internal angle and lock to prevent inadvertent dumping, unauthorized removal and safety-edged finger grip provides convenient grip for service.

Accessory Specialties

AMERICAN DISPENSER

Desert Ray Products

WATROUS INC.

THIS MANUFACTURER RESERVES THE RIGHT TO MAKE CHANGES IN DESIGN OR DIMENSIONS WITHOUT FORMAL NOTICE