



# AMERICAN SPECIALTIES, INC.

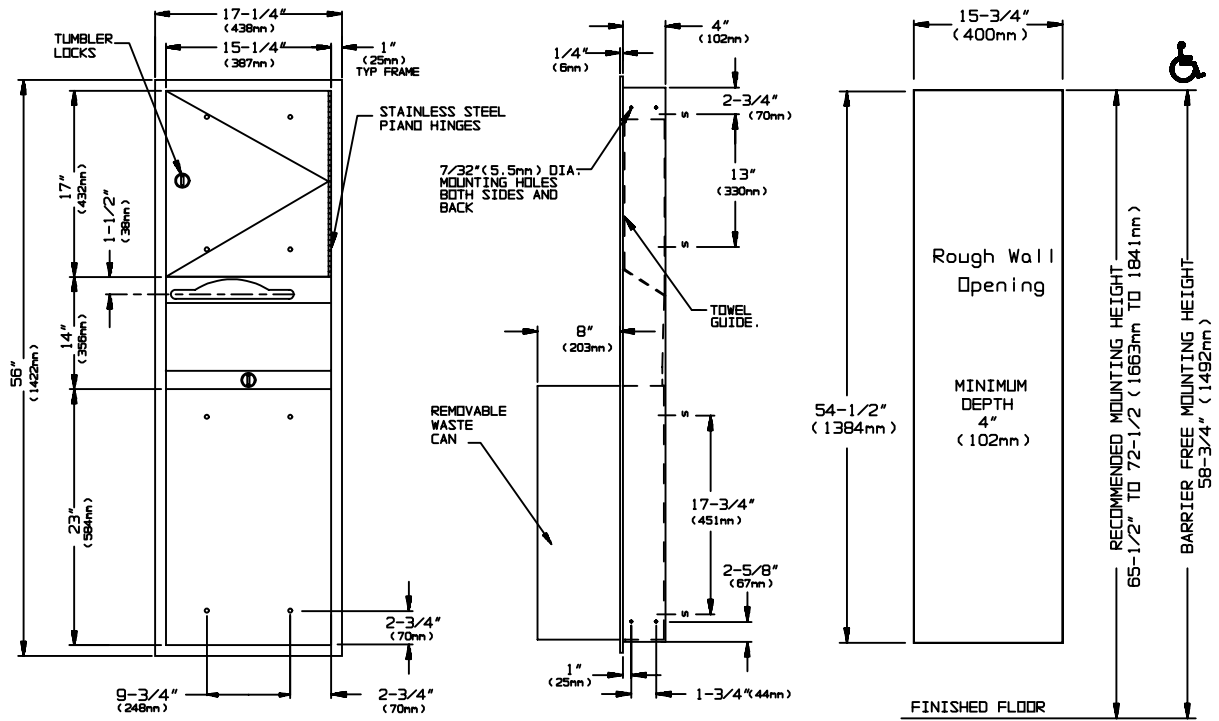
441 Saw Mill River Road, Yonkers, NY 10701 (914) 476-9000

MODEL No: 0469-BL

ISSUED: 1-87

REVISED: 9-04

## PAPER TOWEL DISPENSER AND WASTE RECEPTACLE



### SPECIFICATION

Paper Towel Dispenser and Waste Receptacle shall hold and dispense 800 standard multi-fold or 600 standard C-fold paper towels and shall have a waste capacity of 18 gal (68 litres). Towel dispenser, door, frame, waste container and cabinet shall be fabricated of alloy 18-8 stainless steel, type 304, 22 gauge; all exposed surfaces shall have N°4 satin finish. Towel dispensing slot shall have a fully hemmed-in rolled edge for snag-free dispensing and user safety. Door shall be fabricated in double-pan construction with fiberboard filler and shall be attached to cabinet at side with a full length 3/16" (5mm) dia. stainless steel multi-staked piano hinge and be held closed with a tumbler lock keyed alike to other ASI washroom equipment. Waste container shall have hemmed edges for safety and shall be retained by a tumbler lock keyed alike. Face trim shall be 1" (25mm) wide formed from one piece with no miters, welding or open seams and have 1/4" (6mm) square return to wall. Structural assembly of all components shall be of welded construction.

**Paper Towel Dispenser and Waste Receptacle shall be Model N° 0469-BL as manufactured by American Specialties, Inc., 441 Saw Mill River Road, Yonkers, New York 10701-4913**

### INSTALLATION

Unit is mounted in wall recess using four (4) N° 10 self tapping screws (by others) through concealed mounting holes provided. Note that top of rough wall opening is 3/4" (19mm) below top of unit.

**Rough Wall Opening required is.....15-3/4"W. x 54-1/2"H. x 4"D. minimum (400mm x 1390mm x 102mm)**

### OPERATION

Towels are self-feeding until supply is depleted. properly. Waste container is emptied manually. . Locked compartment prevents unauthorized access.

Accessory Specialties

AMERICAN DISPENSER

Desert Ray Products

WATROUS INC.

THIS MANUFACTURER RESERVES THE RIGHT TO MAKE CHANGES IN DESIGN OR DIMENSIONS WITHOUT FORMAL NOTICE