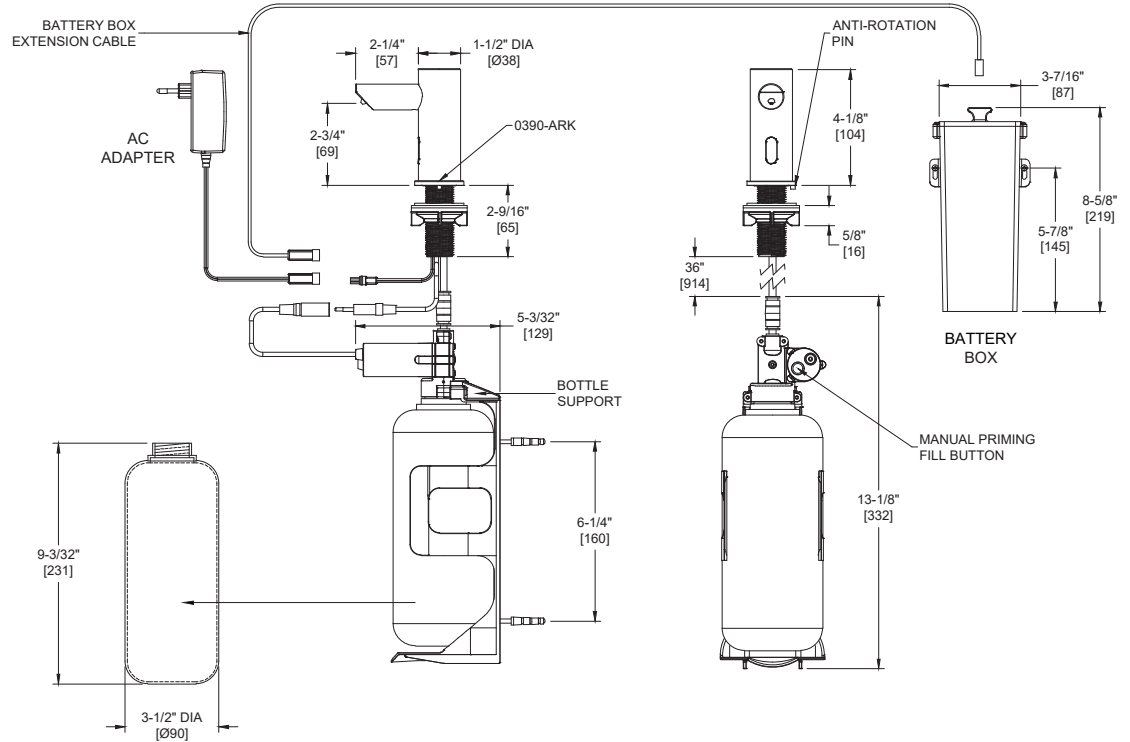



American Specialties, Inc.
Model #0391-(n)
Technical Data Sheet
EZ FILL™ Stand-Alone Liquid Soap Dispenser Heads
Soap Dispensers
EZ Fill
MasterFormat Section 10 28 13

 Scan for
Information

SUSTAINABILITY/LEED


NOTE:
ALL DIM'S INCH [MM]
ILLUSTRATION FOR REF ONLY AND NTS
SEE SOAP DISPENSER CARE & MAINTENANCE
DOCUMENT ONLINE FOR CLEANING

PRODUCT OVERVIEW

Constructed of chrome plated spout and battery or AC power operated, hands-free sensor housing with a highly polished finish over all surfaces. LED indicates function and battery condition on face front. Translucent tank holds 33.8 oz (1 L) of liquid soap. For Matte Black finish, use suffix -41. Soap Requirements: Proper usage of this dispenser requires, that only soap within the following range for viscosity and pH may be used. Viscosity Range (mPa•s or cP): 100 – 3800. pH Range: 5.5 ~ 8.5.

KEY FEATURES & SPECIFICATIONS

- Individual Liquid Soap dispenser
- Elegant Styling that matches the multi-feed dispensers
- Heavy Duty, Chrome Plated Brass
- Vanity Mounted
- Automatic - Battery or AC Option - "No Touch"
- Liquid Soap with 33.8 oz (1.0 L) translucent tank


American Specialties, Inc.
Model #0391-(n)
Technical Data Sheet

OPERATION & MAINTENANCE

System shall operate each time an object is positioned within the sensing range of 1-3/16" to 3-15/16" [30 to 100] \pm 3/8" [10] directly in front of the spout of the dispenser. A stream of appropriate viscosity non-abrasive liquid soap drops with total dispense amount of 0.03 oz (0,8 ml) will be pumped from the nozzle during each activation. Optional remote control unit Model #0393-R (supplied {one (1) per six (6) pack} or order separately) will allow owner programming of alternate dispense amounts and simplify priming when refilling soap container for initial setup and soap-out conditions. See Model #0393-R TDS and Owner's Manual for complete description of functions. Unit will dispense soap while batteries are at suitable charge level (or AC adapter is connected) and correct viscosity soap is present in the tank and system is correctly maintained to enable dispensing (LED is not flashing continuously or does not remain dark when trigger attempt is made). LED will display flash for sensing and continuous flashing for low battery condition (if AC Adapter is not utilized). Manual priming fill button on pump runs motor (or use 0390-R) for easy soap priming. Soap is manually replenished and batteries are replaced on service interval determined by maintenance schedule. See OM & IG for complete description of Features and Operations.

TECHNICAL INFORMATION / PRODUCT PROPERTIES

Property	Value
Dimensions	N/A
Construction	Heavy Duty Chrome Plated Brass
Mounting	Surface Mounted
Options	<div> 1A - Battery Operation, Bright Chrome 1A-41 - Battery Operation, Matte Black 1AC - AC Operation, Bright Chrome 1AC-41 - AC Operation, Matte Black 3AC - AU Model, AC Operation, Bright Chrome 3AC-41 - AU Model, AC Operation, Matte Black </div> <div> 6-1A - Battery Operation, Bright Chrome (6 Pk) 6-1A-41 - Battery Operation, Matte Black (6 Pk) 6-1AC - AC Operation, Bright Chrome (6 Pk) 6-1AC-41 - AC Operation, Matte Black (6 Pk) 6-3AC - AU Model, AC Operation, Bright Chrome (6 Pk) 6-3AC-41 - AU Model, AC Operation, Matte Black (6 Pk) </div>

INSTALLATION

Install spout and sensor housing to vanity deck with anti-rotation kit escutcheon flange, rubber washers and basin nut (supplied) through 1-1/8" diameter [28 dia.] mounting hole and 5/32" diameter [4 dia.] adjacent hole for anti-rotation pin of escutcheon flange. Mount pump/control housing with bottle support bracket to convenient structure under vanity within 24" [610] of shank bottom with two (2) screws and wall anchors (supplied). Connect flex tubing from dispenser shank to fitting on top of pump/control module. Connect spout control cable plug into control unit inline cable connector. Mount battery compartment in convenient location under vanity deck with two (2) screws and wall anchors (supplied) within easy reach of extension cable length and plug connector into mating inline power connector. Install six (6) 'D'-size 1.5V cells (supplied by others) in under-deck battery compartment according to polarity indication, plug battery cable jack into battery box socket in cover handle and screw lock cover. The optional Battery Extension Cable (shown on diagram, p/n 0390-EBC) may help make installation easier in tight under-vanity conditions. Alternatively, plug AC Adapter into GFCI power outlet located under vanity within 13.5 ft (412 cm) of pump/control housing and plug connector into mating inline power connector. See OM & IG provided in box with unit for complete installation details.

WARRANTY

One (1) Year from date of invoice

American Specialties, Inc. | 441 Saw Mill River Road, Yonkers, NY 10701 | (914) 476-9000 | www.americanspecialties.com

Model: #0391-(n)

Revision: R1 Issued: 11/1/2021 Revised: 3/10/2023

CSI: 10 28 13 Toilet Accessories

Page: 2 of 2

Manufacturer reserves the right to make changes to the design, dimensions or functionality of the product without formal notice.