



AMERICAN SPECIALTIES, INC.

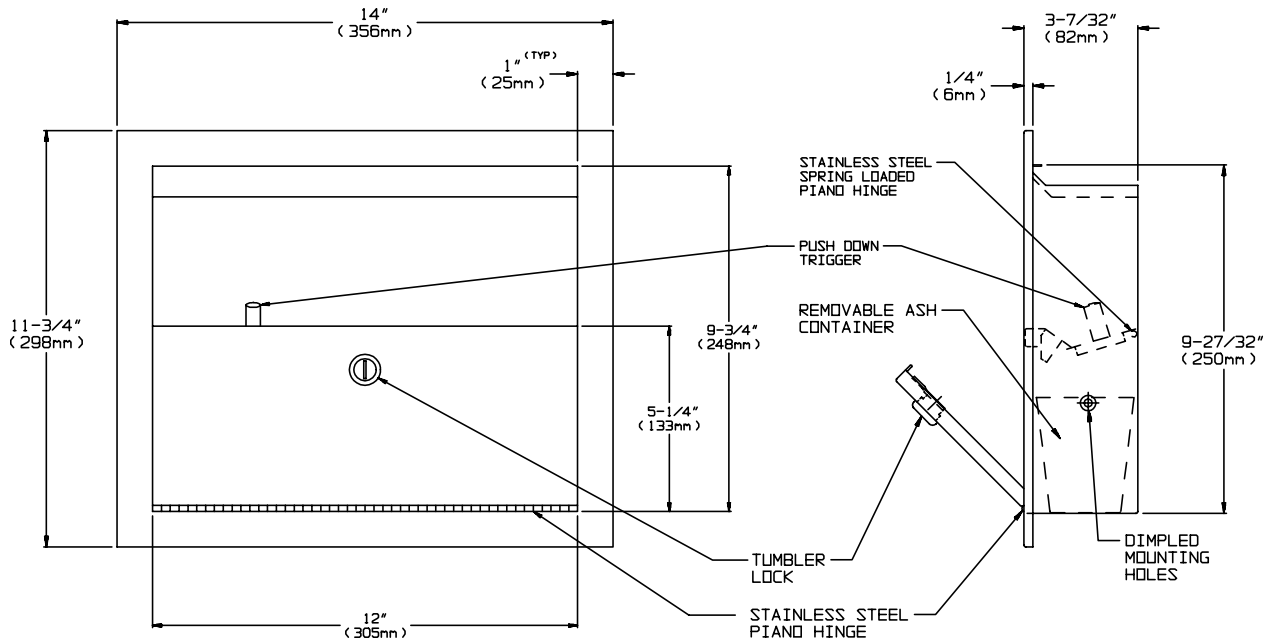
441 Saw Mill River Road, Yonkers, NY 10701 (914) 476-9000

MODEL No: 0004

ISSUED: 1-87

REVISED: 8-04

RECESSED ASH RECEPTACLE



SPECIFICATION

Recessed Ash Receptacle unit with removable container shall be fabricated of alloy 18-8 stainless steel, type 304, N° 22 gauge. All exposed surfaces shall be N° 4 satin finish and shall be protected during shipment with a PVC film easily removable after installation. Ash trough shall have a push-down trigger for depositing ashes and blade shall be mounted on a spring loaded stainless steel piano hinge. Service door shall be attached to cabinet with a stainless steel piano hinge and be held closed with a tumbler lock keyed alike to other ASI Washroom Equipment. Face trim shall be 1" (25mm) wide formed from one piece with no mitres, welding or open seams and have 1/4" (6.35mm) square return to wall. Structural assembly of all components shall be of welded construction.

Recessed Ash Receptacle shall be Model N° 0004 as manufactured by American Specialties, Inc. 441 Saw Mill River Road Yonkers, New York 10701-4913

INSTALLATION

Unit is mounted in wall recess or partition using N° 10 self tapping screws (by others) through concealed mounting holes provided. For compliance with ADA Accessibility Guidelines the unit should be installed so that the ashtray is 54" (1372 mm) max above finished floor (AFF) when clear side reach is provided, or 48" (1219 mm) max AFF with forward reach only provided and 46" (1168 mm) max AFF with side reach over an obstruction (ie: vanity). Note that RWO is 3/4" (19mm) below top of frame trim. Typical mounting height is 53-3/4" (1365mm) AFF from top of frame trim.

Rough Wall Opening (RWO) required is 2-1/2"W x 10-1/4"H x 3- 1/8"D minimum (318 mm x 260 mm x 79mm).

OPERATION

Ashes are deposited in waste container by activating push-down release on ash-trough. Waste container is emptied manually on cycle determined by maintenance needs.

Accessory Specialties

AMERICAN DISPENSER

Desert Ray Products

WATROUS.INC.

THIS MANUFACTURER RESERVES THE RIGHT TO MAKE CHANGES IN DESIGN OR DIMENSIONS WITHOUT FORMAL NOTICE