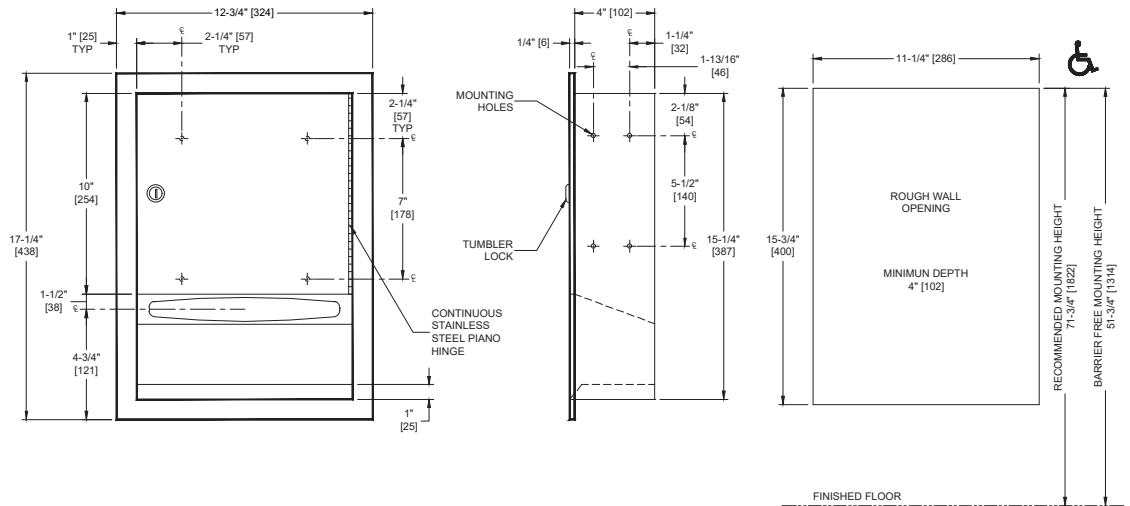



**American Specialties, Inc.**
**Model #0457**
**Technical Data Sheet**
**Paper Towel Dispenser (Multi - C-Fold) – Recessed**
*Paper Towel Dispensers*
*Traditional*
*MasterFormat Section 10 28 13*

 Scan for  
Information

**SUSTAINABILITY/LEED**

MR 4.1 (1) MR 6 (1) EQ 4.2 (1)

MR 4.2 (1) EQ 4.1 (1) EQ 4.4 (1)

**NOTE:**

ALL DIM'S INCH [MM]

ILLUSTRATION FOR REF ONLY AND NTS

 FOR CLEANING INSTRUCTIONS SEE APPROPRIATE SECTIONS IN  
PRODUCT CARE & MAINTENANCE BULLETIN (PCM) ON ASI WEBSITE

**PRODUCT OVERVIEW**

Dispenses 350 C-fold or 500 multi-fold paper towels. Well-suited for smaller washrooms with less space and traffic. Towels are self-feeding until supply is depleted. Unit may be reloaded with a partial load in-place and will continue to feed properly.

**KEY FEATURES & SPECIFICATIONS**

- Compact size for smaller spaces
- Towel slot has a fully hemmed edge for snag-free dispensing and user safety
- Type 304 Stainless Steel - Satin Finish
- Recessed
- Pull Type
- 350 C-Fold OR 475 Multi-Fold

**American Specialties, Inc.****Model #0457****Technical Data Sheet****OPERATION & MAINTENANCE**

Towels are self-feeding until supply is depleted. Towels are refilled from the bottom via two push-up flaps.

**TECHNICAL INFORMATION / PRODUCT PROPERTIES**

Property	Value
Dimensions	12-3/4" [324] W x 17-1/4" [438] H x 4-1/4" [108] D
Construction	Type 304 Stainless Steel - Satin Finish
Power	N/A
Operation	Manual - Pull Type
Mounting	Recessed
Capacity	350 C-Fold OR 475 Multi-Fold

**INSTALLATION**

Unit is recessed mounted in wall using #10 screws (by others) through concealed mounting holes provided. For compliance with 2010 ADA Accessibility Standards install unit so that centerline of towel dispenser slot is 48" [1219] maximum above finished floor (AFF). To comply with CalDAG mounting height, towel dispenser slot should be 40" [1016] AFF. Note that bottom of RWO is 3/4" [19] above bottom of unit.

Rough Wall Opening (RWO) required is 11-1/4" [286] W x 15-3/4" [400] H x 4" [102] D minimum

**WARRANTY**

One (1) Year from date of Invoice