



American Specialties, Inc.

Model #0452

Technical Data Sheet

Paper Towel Dispenser (Multi - C-Fold) – Recessed

<i>Paper Towel Dispensers</i>	<i>Traditional</i>	
-------------------------------	--------------------	--

MasterFormat Section 10 28 13



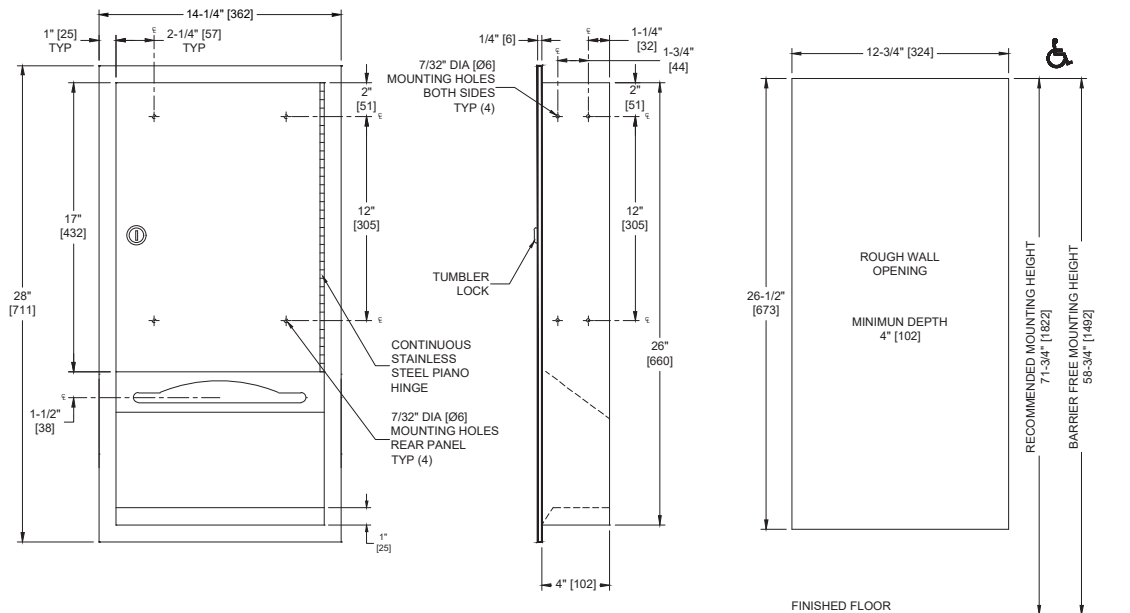
Scan for
information



SUSTAINABILITY/LEED

MR 4.1 (1) MR 6 (1) EQ 4.2 (1)

MR 4.2 (1) EQ 4.1 (1) EQ 4.4 (1)



NOTE:

ALL DIM'S INCH [MM]
ILLUSTRATION FOR REF ONLY AND NTS
FOR CLEANING INSTRUCTIONS SEE APPROPRIATE SECTIONS IN
PRODUCT CARE & MAINTENANCE BULLETIN (PCM) ON ASI WEBSITE

PRODUCT OVERVIEW

Dispenses 600 C-fold or 800 multi-fold paper towels. Towels are self-feeding until supply is depleted. Unit may be reloaded with a partial load in-place and will continue to feed properly. Door held closed with a tumbler lock.

Key Features & Specifications

- Self feeding towels
- Towel slot has a fully hemmed edge for snag-free dispensing and user safety
- Type 304 Stainless Steel - Satin Finish
- Recessed
- Pull Type
- 600 C-Fold OR 800 Multi-Fold

**American Specialties, Inc.****Model #0452****Technical Data Sheet****OPERATION & MAINTENANCE**

Towels are self-feeding until supply is depleted. Towels are refilled from the bottom via two push-up flaps.

TECHNICAL INFORMATION / PRODUCT PROPERTIES

Property	Value
Dimensions	14-1/4" [326] W x 28" [711] H x 4-1/4" [108] D
Construction	Type 304 Stainless Steel - Satin Finish
Power	N/A
Operation	Manual - Pull Type
Mounting	Recessed
Capacity	600 C-Fold OR 800 Multi-Fold

INSTALLATION

Unit is recessed mounted in wall using #10 screws (by others) through concealed mounting holes provided. For compliance with 2010 ADA Accessibility Standards install unit so that centerline of towel dispenser slot is 48" [1219] maximum above finished floor (AFF). To comply with CalDAG mounting height, towel dispenser slot should be 40" [1016] AFF. Note that bottom of RWO is 3/4" [19] above bottom of unit.

Rough Wall Opening (RWO) required is 12-3/4" [324] W x 26-1/2" [673] H x 4" [102] D minimum

WARRANTY

One (1) Year from date of Invoice