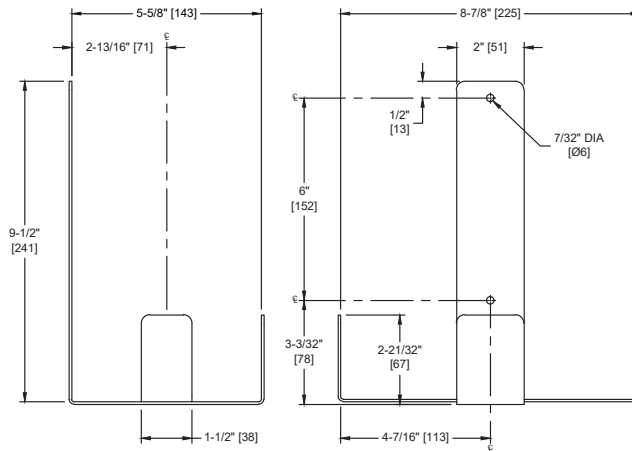
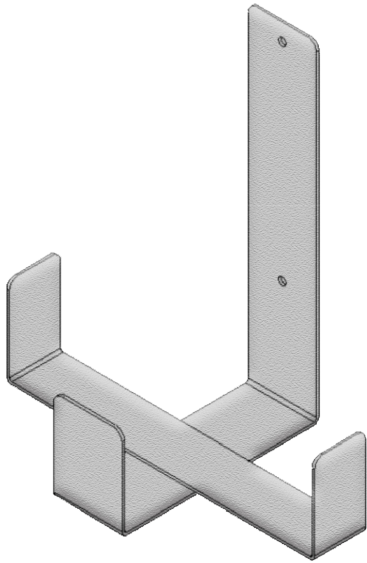
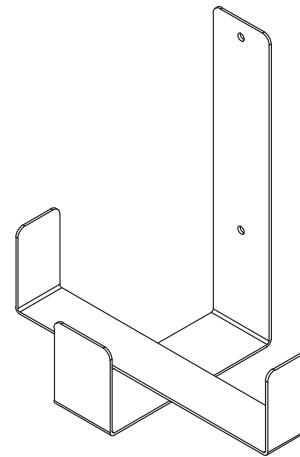



American Specialties, Inc.
Model #0390-BR
Technical Data Sheet
EZ Fill™ – Under Counter Mounting Bracket (for 5 Liter MULTI-FEED Container)
Soap Dispensers
EZ Fill
MasterFormat Section 10 28 13

 Scan for
Information

SUSTAINABILITY/LEED

MR 4.1 (1) MR 6 (1) EQ 4.2 (1)

MR 4.2 (1) EQ 4.1 (1) EQ 4.4 (1)



NOTE:
ALL DIM'S INCH [MM]
ILLUSTRATION FOR REF ONLY AND NTS
SEE SOAP DISPENSER CARE & MAINTENANCE
DOCUMENT ONLINE FOR CLEANING

PRODUCT OVERVIEW

Mounting bracket holds one (1) EZ Fill™ Multi-Feed 169 oz (5 L) Tank for EZ Fill™ Vanity Mounted Automatic Soap Dispensing System. Mounting bracket is fabricated of 14 gauge type 304 stainless steel alloy 18-8.

KEY FEATURES & SPECIFICATIONS

- Wall Mounted Bracket For 5 Liter Tank
- Can be mounted under the sink
- Type 304 Stainless Steel - Satin Finish
- Under Counter

**American Specialties, Inc.****Model #0390-BR****Technical Data Sheet****OPERATION & MAINTENANCE**

Installer positions Multi-Feed Tank in bracket manually to retain in most convenient orientation to connect to top fill hose from countertop fill port fitting. Upturned wings on bracket securely hold tank from shifting. Weight of tank with pressure of installed fill hose prevents tank from lifting out of bracket during life of installation. Full weight of liquid soap contents up to maximum fill level is supported for distribution through installed supply tubing provided with Model 0390-(n) soap dispensers.

TECHNICAL INFORMATION / PRODUCT PROPERTIES

Property	Value
Dimensions	N/A
Construction	Type 304 Stainless Steel - Satin Finish
Mounting	Under Vanity/Counter
Options	N/A

INSTALLATION

Install bracket on wall using two (2) #10 self-threading screws (by others) through mounting holes provided.

WARRANTY

One (1) Year from date of invoice