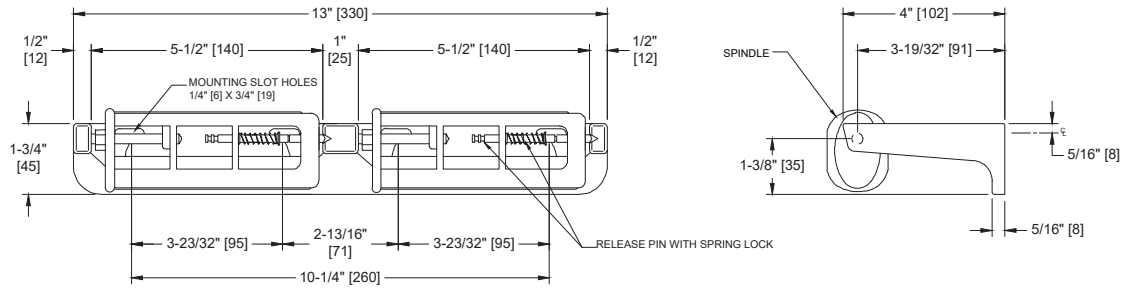


**American Specialties, Inc.****Model #0264-1A****Technical Data Sheet****Double Toilet Tissue Holder – Surface Mounted, Unrestricted Delivery***Toilet Tissue Dispensers**MasterFormat Section 10 28 13*Scan for
Information**SUSTAINABILITY/LEED**

MR 4.1 (1) MR 6 (1) EQ 4.2 (1)

MR 4.2 (1) EQ 4.1 (1) EQ 4.4 (1)

NOTE:ALL DIM'S INCH [MM]
ILLUSTRATION FOR REF ONLY AND NTS**PRODUCT OVERVIEW**

Heavy-duty cast aluminum, satin matte silver-grey finish. Holds 2 rolls up to 6" diameter [Ø152] (2000 sheets).

KEY FEATURES & SPECIFICATIONS

- Double Roll Dispenser
- Unrestricted Delivery Spindle
- Aluminum Casting with Satin-Matte, Silver-Grey Finish
- Surface Mounted

**American Specialties, Inc.****Model #0264-1A****Technical Data Sheet****OPERATION & MAINTENANCE**

Spindles revolve freely. Roll core prevents access to release pin and cannot be removed from spindle until exhausted. Unit is replenished by releasing a concealed pin which in turn releases a spring lock mechanism on spindle.

TECHNICAL INFORMATION / PRODUCT PROPERTIES

Property	Value
Dimensions	13" [330] W x 1-3/4" [45] H x 4-3/4" [120] D
Construction	Aluminum Casting with Satin-Matte, Silver-Grey Finish
Mounting	Surface Mounted
Capacity	Holds two (2) rolls of standard core roll toilet paper up to 6" Dia. [Ø152]

INSTALLATION

Unit is surface mounted on wall or partition using #10 self-threading screws (by others). For compliance with 2010 ADA Accessibility Standards, unit should be installed so that tissue roll centerline is between 44" [1118] maximum above finished floor (AFF) and 19" [483] minimum AFF.

OPTIONS**WARRANTY**

One (1) Year from date of Invoice