

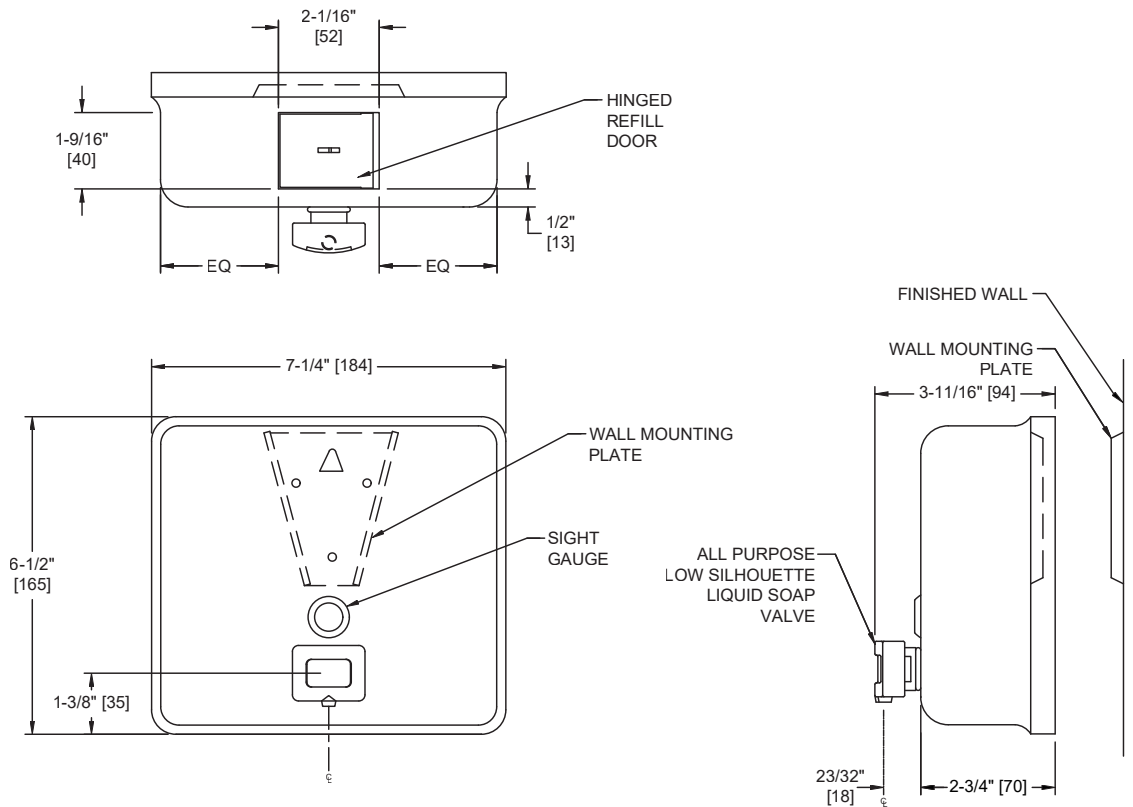

American Specialties, Inc.
Model #9343
Technical Data Sheet
Profile Collection Liquid Soap Dispenser – Surface Mounted
Soap Dispensers
Profile
MasterFormat Section 10 28 13

 Scan for
Information

SUSTAINABILITY/LEED

MR 4.1 (1) MR 6 (1) EQ 4.2 (1)

MR 4.2 (1) EQ 4.1 (1) EQ 4.4 (1)



NOTE:
ALL DIM'S INCH [MM]
ILLUSTRATION FOR REF ONLY AND NTS
SEE SOAP DISPENSER CARE & MAINTENANCE
DOCUMENT ONLINE FOR CLEANING

PRODUCT OVERVIEW

All-purpose valve dispenses liquid, lotion and detergent-type soaps, with a capacity of 48 fl. oz. (1.4 L). It has a tamper-resistant refill window with concealed fastening and vandal-resistant hinged filler-top. Soap Requirements: Proper usage of this dispenser requires, that only soap within the following range for viscosity and pH may be used. Viscosity Range (mPa•s or cP): 100 – 3500 pH Range: 5.5 ~ 8.0. Soaps containing reportable salts, chlorides and alcohols should be avoided.

KEY FEATURES & SPECIFICATIONS

- Robust 16 Gauge Stainless Steel face
- Curved (radius) edges add elegance
- Type 304 Stainless Steel - Satin Finish
- Surface Mounted
- 3/16" CONCEALED piano hinge adds durability
- Dispenses liquid, lotion and detergent-type soaps - capacity 48 fl. oz. (1.4 L)

**American Specialties, Inc.****Model #9343****Technical Data Sheet****OPERATION & MAINTENANCE**

Soap is manually dispensed by depressing push button. Unit is refilled through hinged door at top requiring special key (supplied) to open. Soap tank will continue to feed properly until empty. Tank supply is replenished manually on cycle determined by maintenance needs.

TECHNICAL INFORMATION / PRODUCT PROPERTIES

Property	Value
Dimensions	7-1/4" x 6-1/2" x 3-11/16" [184 x 165 x 94] Spout Projection: 15/16" [24]
Construction	Type 304 Stainless Steel - Satin Finish with concealed multi-staked piano hinge - 3/16" diameter
Mounting	Surface Mounted
Options	N/A

INSTALLATION

Unit is surface mounted to wall or partition by means of a wall mounting plate and screws. Unit is secured to mounting plate and locked in place by means of a locking screw installed through tamper resistant refill door. For maximum usability and compliance with ADA Accessibility Guidelines, unit should be installed so that valve is 54" [1372] maximum Above Finished Floor (AFF) when clear floor side reach access is provided or 48" [1219] max. AFF if clear floor forward reach access is provided or 46" [1168] max. AFF if side reach over an obstruction only is provided (ie: vanity). Recommended installation for general utility is 42" [1066] AFF or 6" [152] minimum above wash basin.

WARRANTY

One (1) Year from date of Invoice