

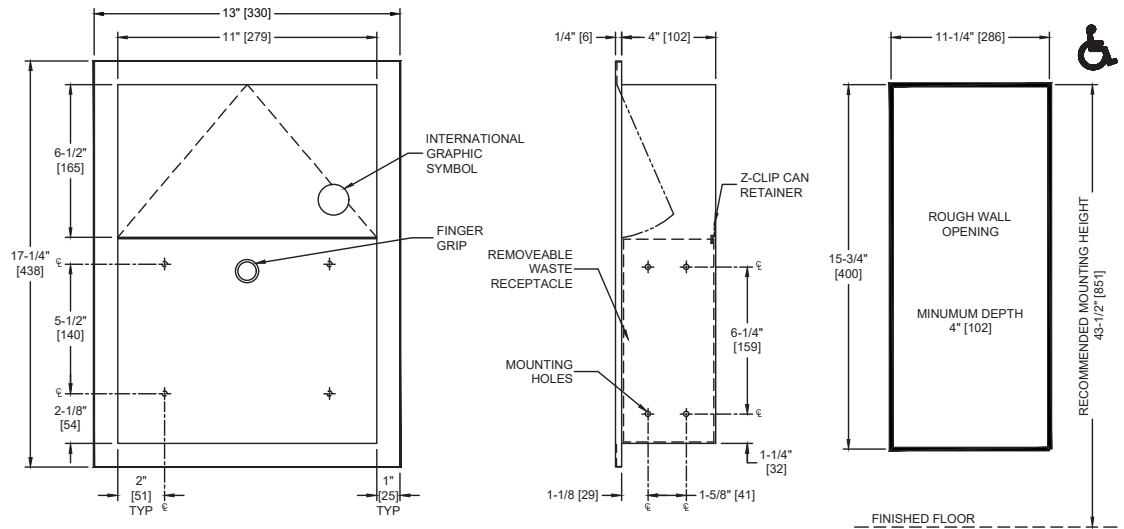

**American Specialties, Inc.**
**Model #0473**
**Technical Data Sheet**
**Sanitary Napkin Disposal – Recessed**
*Feminine Hygiene Vendors and Disposals*
*MasterFormat Section 10 28 13*

 Scan for  
Information

**SUSTAINABILITY/LEED**

MR 4.1 (1) MR 6 (1) EQ 4.2 (1)

MR 4.2 (1) EQ 4.1 (1) EQ 4.4 (1)


**NOTE:**

 ALL DIM'S INCH [MM]  
ILLUSTRATION FOR REF ONLY AND NTS

**PRODUCT OVERVIEW**

Self-closing door is mounted to cabinet with stainless steel spring hinge. Recessed for side wall installation. Holds 1.5 gal (5.7 liters) of dry solids. Users push door to deposit waste material. Door is self-closing. Unit is emptied by removing can and removing disposable waxed waste paper bag which is furnished by others. Waste container is held in place by a "Z" clip retainer to prevent inadvertent dumping of contents. Safety-edged finger grip provides convenient grip for service. Door, flanges, waste receptacle and cabinet shall be 22 gauge type 304 stainless steel alloy 18-8.

**KEY FEATURES & SPECIFICATIONS**

- Type 304 Stainless Steel - Satin Finish
- Recessed
- 1.5 gal (5.7 L) of dry/solids Waste Capacity

**American Specialties, Inc.****Model #0473****Technical Data Sheet****OPERATION & MAINTENANCE**

Users push door to deposit waste material. Door is self-closing. Unit is emptied by removing can and removing disposable waxed waste paper bag which is furnished by others. Waste container is held in place by a "Z" clip retainer to prevent inadvertent dumping of contents. Safety-edged finger grip provides convenient grip for service.

**TECHNICAL INFORMATION / PRODUCT PROPERTIES**

Property	Value
Dimensions	13" [330] x 4-1/4" [108] x 17-1/4" [438]
Construction	Type 304 Stainless Steel - Satin Finish
Mounting	Recessed
Capacity	1.5 gal (5.7 L) of dry/solids Waste Capacity

**INSTALLATION**

Unit is mounted in wall recess using #10 self-threading screws (by others) through concealed mounting holes provided. Note that top of rough wall opening is 3/4" [19] below top of unit.

Rough Wall Opening (RWO) required is 11-1/4" [289] W x 15-3/4" H [400] x 4" [102] D minimum

**WARRANTY**

One (1) Year from date of Invoice