


**American Specialties, Inc.**
**Model #0462-AD**
**Technical Data Sheet**
**Paper Towel Dispenser & Waste Receptacle – Recessed**
*Paper Towel Combination Units*
*Traditional*
*MasterFormat Section 10 28 13*

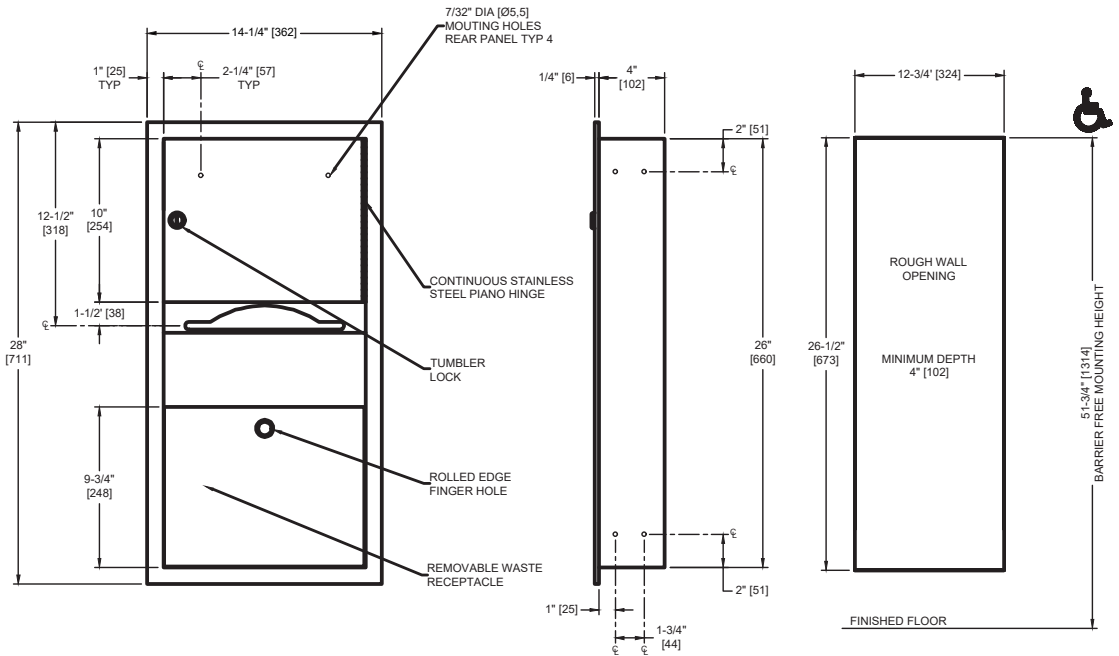
 Scan for  
Information

**SUSTAINABILITY/LEED**

MR 4.1 (1) EQ 4.1 (1)

MR 4.2 (1) EQ 4.2 (1)

MR 6 (1) EQ 4.4 (1)


**NOTE:**

ALL DIM'S INCH [MM]  
ILLUSTRATION FOR REF ONLY AND NTS  
FOR CLEANING INSTRUCTIONS SEE APPROPRIATE SECTIONS IN  
PRODUCT CARE & MAINTENANCE BULLETIN (PCM) ON ASI WEBSITE

**PRODUCT OVERVIEW**

Dispenses 350 C-fold or 475 multi-fold paper towels. 2 gal. (7.6 L) waste receptacle.

**KEY FEATURES & SPECIFICATIONS**

- Double-pan construction door has "no-Flex" fiberboard filler for added rigidity and strength
- Door is attached to the cabinet with a 3/16" diameter [Ø5] Heavy-duty, Multi-Staked Stainless Steel Piano Hinge
- Type 304 Stainless Steel - Satin Finish
- Door & Cabinet 20 gauge.
- Recessed
- 350 C-Fold or 475 Multi-Fold / 2.0 Gal. (7.6 L) Waste Capacity

**American Specialties, Inc.****Model #0462-AD****Technical Data Sheet****OPERATION & MAINTENANCE**

Towels are self-feeding until supply is depleted. Unit may be reloaded with a partial load in-place and will continue to feed properly. Waste container is emptied manually on cycle determined by maintenance needs.

**TECHNICAL INFORMATION / PRODUCT PROPERTIES**

Property	Value
Dimensions	14-1/14" [362] W x 28" [711] H x 4-1/4" [108] D
Construction	Type 304 Stainless Steel - Satin Finish
Mounting	Recessed
Capacity	350 C-Fold or 475 Multi-Fold / 2.0 Gal. (7.6 L) Waste Capacity

**INSTALLATION**

Unit is recessed mounted in wall using #10 self-threading screws (by others) through concealed mounting holes provided. Note that top of rough wall opening is 3/4" [19] below top of unit.

Rough Wall Opening (RWO) required is 12-3/4" [324] W x 26-1/2" [673] H x 4" [102] D minimum

**WARRANTY**

One (1) Year from date of Invoice